

**Digital Pen&Mouse - Device
Properties**

User Guide

Table of Contents

Digital Pen&Mouse - Device Properties	3
Introduction	3
Receiver Settings.....	4
Mouse	4
Custom Wheel Applications	6

Digital Pen&Mouse - Device Properties

Introduction

Advanced users can customize the device settings in several possible areas:

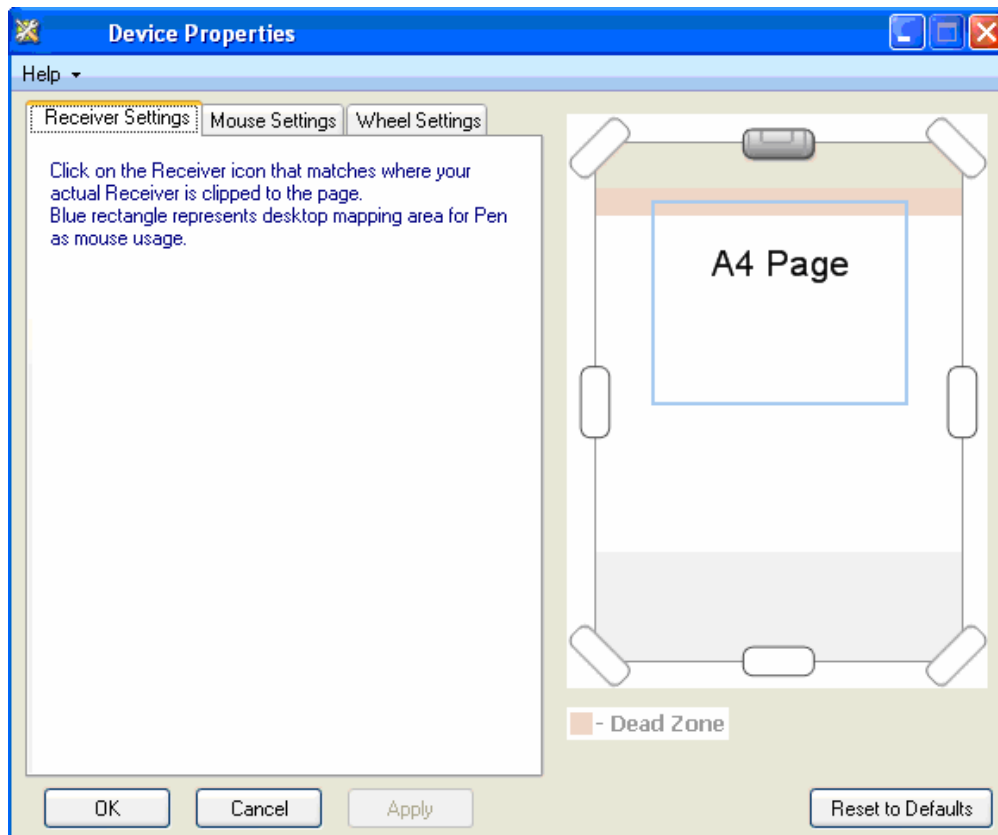
- [Receiver Settings](#)
- [Mouse](#)
- [Custom Wheel Applications](#)

Within all of the Device Properties tabs are four standard buttons: OK, Cancel, Apply, and Reset to Defaults.

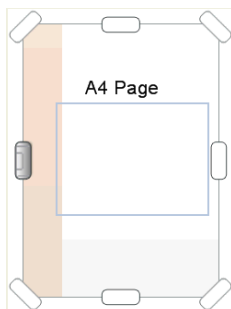
OK	Accepts your changes and closes the Device Properties.
Cancel	Closes the Device Properties without accepting any of your changes.
Apply	Applies your changes and keeps the Device Properties open.
Reset to Defaults	Resets all of the Device Properties settings to the default.

Receiver Settings

By default, your Digital Pen and Receiver have been configured such that the Receiver is clipped to the top center of an A4 page.



You can change this configuration by clicking on one of the placement markers on the Receiver Settings section. If for example, you click on the middle left marker, then Digital Pen&Mouse configures the Digital Pen's range with the understanding that the Receiver is attached to the right side of the page.

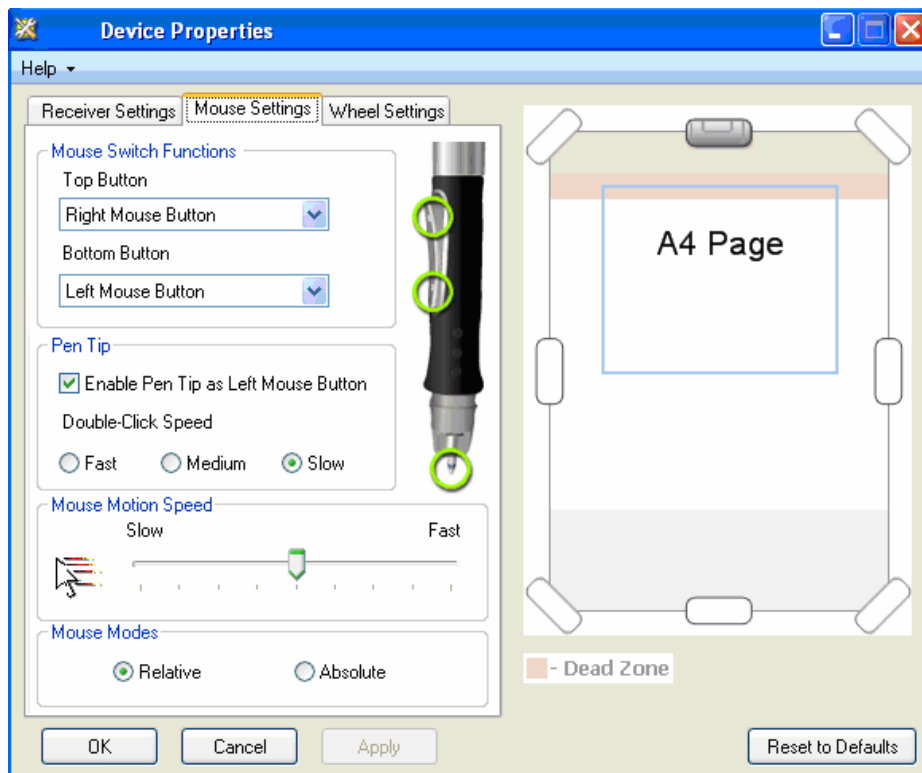


Mouse

The Device Manager allows you to calibrate the following Digital Pen Mouse settings:

- [Set Mouse Switch Functions](#)
- [Set the Pen Tip settings](#)

- [Set the Mouse Motion speed](#)
- [Set the Mouse Modes](#)



To set the button behaviors:

1. Click the Top Button drop-down arrow and select a value.
2. Click the Bottom Button drop-down and select a value.

To set the pen tip :

1. Click a check to enable the **Enable Pen Tip as Left Mouse Button** setting.
2. Click on the **Fast**, **Medium**, or **Slow** options.

To set the mouse motion speed:

1. Adjust slider position to change mouse speed.
2. Moving slider towards Slow position sets mouse speed to slower, and moving slider towards Fast position sets mouse speed to faster.
3. Upon changing slider position size of blue rectangle will change accordingly. Blue rectangle represents mouse mapping area of your desktop.

To change mouse modes while using pen:

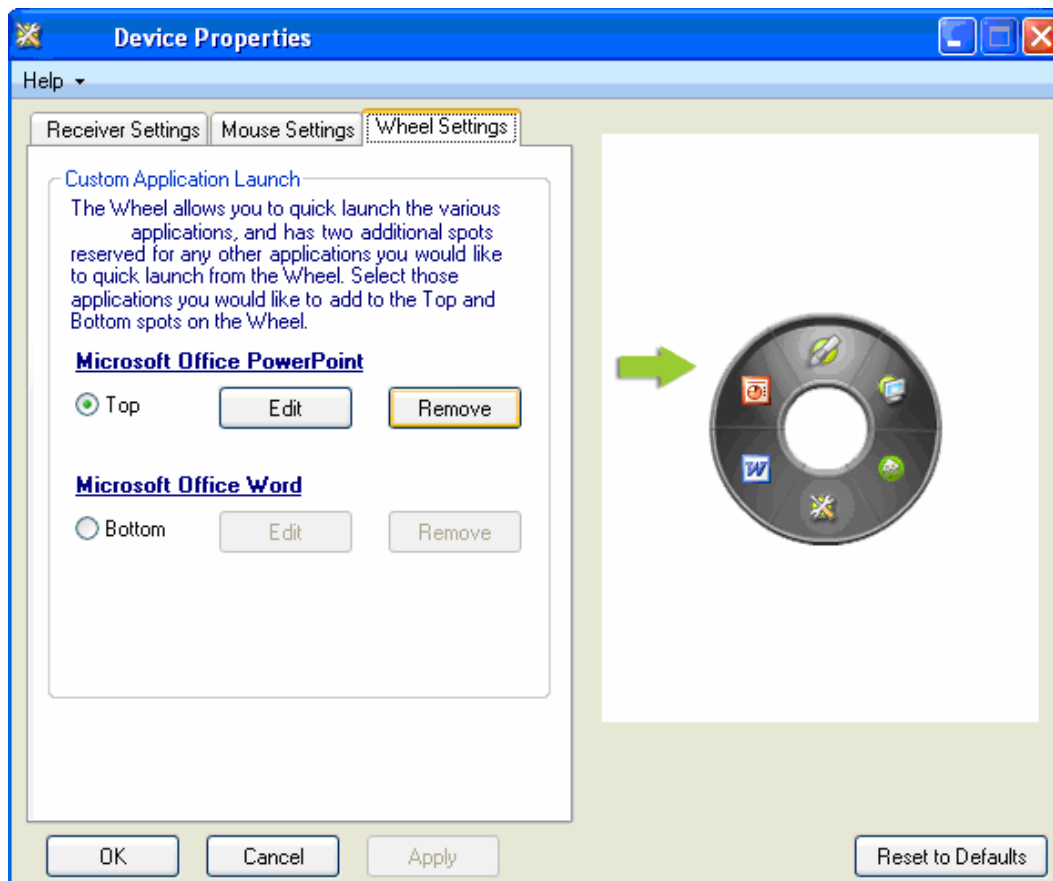
1. **Relative** : pen will act as a relative mouse. In this mode, a short and fast movement of the pen will move the mouse cursor further than a slow one.
2. **Absolute** : pen will act as an absolute mouse. In this mode the Blue mapped area represents your screen.

Custom Wheel Applications

When you click on the Digital Pen's rocker switch, the Wheel appears on your screen with a set of predefined Digital Pen&Mouse applications that you can launch directly from the Wheel.

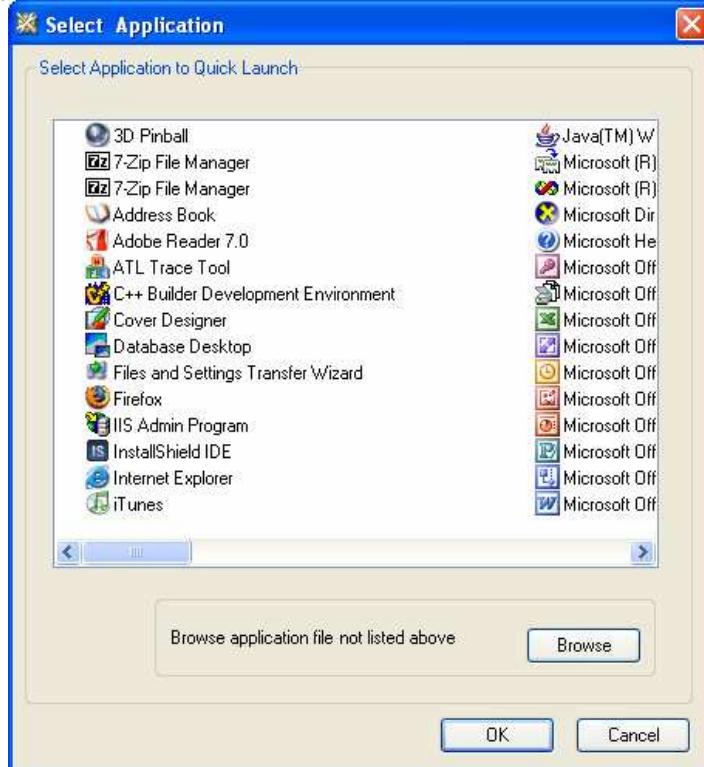
There are also two placements: top and bottom of the Wheel's left side that are reserved for any other application you might wish to launch from the Wheel.

The default custom applications are MS Word and PowerPoint, provided they are installed on your PC.



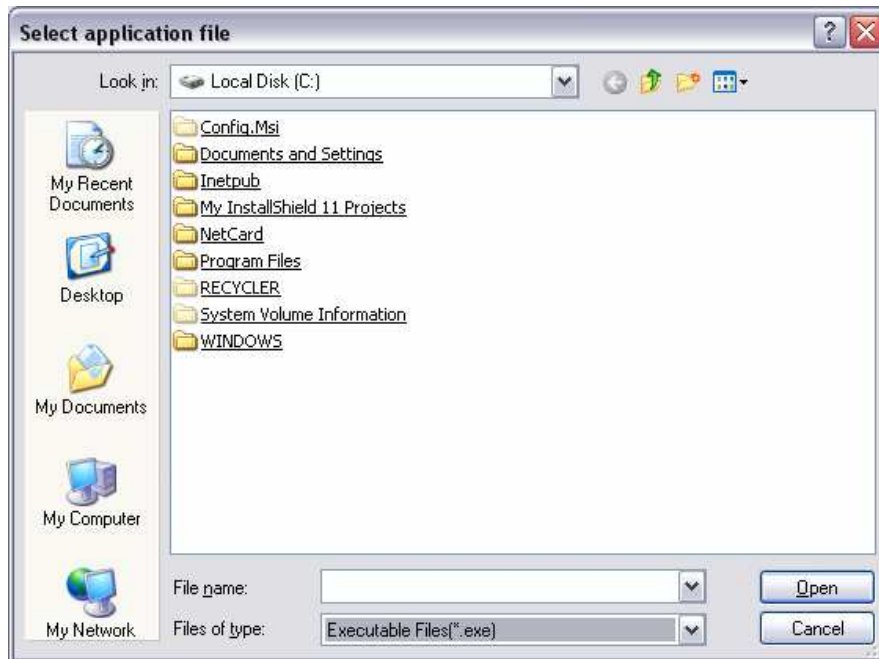
To add an application to the Wheel:

1. Select the position on the Wheel (**Top** or **Bottom**).
2. Click **Edit**.
3. "Select Application" window will display list of the most applications installed on your machine. Click on icon to select desired application.



4. Click OK button to add selected application to the Wheel.

5. In case application you would like to add to the Wheel is not listed in the "Select Application" list, click on Browse button.



6. Locate the executable file and click **Open**.
7. If necessary, repeat the above steps for the second custom application.

To remove a custom application:

1. Select the application you want to remove (**Top** or **Bottom**).
2. Click **Remove**.